

Class Reference Information:

**Reception**

Robin & Wren  
 (EYFS/Foundation Stage)

**Key Stage 1 (KS1)**

Year 1: Swift & Nightingale, Year 2: Woodpecker & Kingfisher

**Lower Key Stage 2 (LKS2)**

Year 3: Osprey & Falcon, Year 4: Buzzard & Skylark

**Upper Key Stage 2 (UKS2)**

Year 5: Kestrel & Red Kite  
 Year 6: Owl & Eagle

**Maths celebrations**

Yesterday, four of our Year 5s represented Gamlingay Village Primary at the Cambridgeshire Maths Challenge. They travelled to Peterborough for their heat. This is the recount by one of the pupils:

*At the maths competition we did a variety of different questions including a round where two people had to look at a maths related picture then explain what they saw to the other two who had to draw what they were being told. It was very good and inclusive. There were four rounds: group 1, memory, group 2 and estimation. The hardest round was the first one as we had just come from a long car drive and our minds needed to get back into rhythm. We also had an extra thinks task to do during the first two rounds. These questions were slightly easier, and we only got one point for each correct answer on the sheet. Our team came second place out of nine schools. We are super proud.*



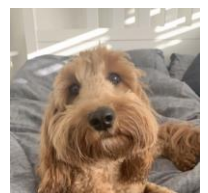
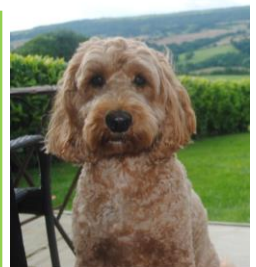
On Tuesday this week, the whole school took part in a maths escape room challenge. Classes had different themes, e.g. Harry Potter, rainforest, a chocolate factory and more. They all had to solve mathematical puzzles and crack codes to escape. Everyone enjoyed the challenge.

**Meet Milo**

Gamlingay Village Primary would like to introduce Milo to the school. Milo is a six-year-old trained school wellbeing dog. He is a Cockapoo and therefore hypoallergenic and non-shedding.

Milo has worked in two previous schools and comes in for one day every couple of weeks. While in school his role may range from hearing children read to offering a comforting cuddle. Evidence from the previous schools that he has worked in indicate that benefits include:

- Cognitive – companionship with a dog stimulates memory, problem-solving and game-playing.
- Social – a dog provides a positive mutual topic for discussion, encourages responsibility, wellbeing and focused interaction with others. Milo has also supported a number of pupils with a fear of dogs to gain confidence around him, under the close supervision of his owner Mrs Hinton.
- Emotional – a school dog improves self-esteem, acceptance from others and lifts mood, often provoking laughter and fun. Dogs can also teach compassion and respect for other living things as well as relieving anxiety.
- Physical – interaction with a furry friend reduces blood pressure, provides tactile stimulation, assists with pain management, gives motivation to move, walk and stimulates the senses.
- Environmental – a dog in a school increases the sense of a family environment, with all of the above benefits continuing long after the school day is over.



## Focus on SATs

Next week Year 6 are sitting their SATs. These are the end of Key Stage 2 National Curriculum tests. The tests include grammar, punctuation and spelling, reading and maths. The children have been working very hard to prepare for these. These are an important part of the school calendar and involve the whole school community. Staff have extra training and are redeployed to support SATs; teachers run extra groups to prepare children; we expect all children and staff to respect the Year 6s.



## Community

It was great to be able to celebrate the 10<sup>th</sup> birthday of Millbridge Brook Meadows. Some of the children helped to create and bury a time capsule. Look out for more info about nature trails there. Thanks to Mrs Pearce for organising this.

## Family time

Why don't you find out more about your family history? Create a family tree or visit a place that was significant to your family in the past.

## Reading

Did you know children who have a library with at least 20 books of their own [have been found to achieve up to 3 more years of schooling](#) than kids who don't have reading material at home?

## Safeguarding

If we have any concerns at school about your child, the class teacher will normally speak to parents as a first port of call. This might be about healthy lunches, weather-appropriate clothing, a change of behaviour, family issues, inappropriate language.

## Summer ready!

The weather has finally realised that we are in the Summer Term! Please ensure that children have suncream and that they know how to apply it. If your child might need help with applying **suncream** because of additional needs, please go to the office to sign a form, giving permission for an adult in school to apply the suncream.

Please ensure that children's belongings are named: sun hats, suncream, jumpers, cardigans and water bottles.

## Meet Mrs Blackaby



Job title: Robin class teacher  
At 10am on a Tuesday, you will probably find me ... supporting Robin class in their busy learning time. This term we are learning about castles!  
My favourite book when I was young was called Ballet Shoes by Noel Streatfield. It's about 3 sisters and their adventures together.  
When I was at school, I loved reading and would spend all my time in the school library curled up with a book!

## Dates for your Diary

- 13th-16th May: Year 6 SATs
- 21st May: EYFS/KS1 Sports Day (parents invited 1.30-3pm)
- 22nd May: KS2 Sports Day (parents invited 1.30-3pm)
- 24th May: INSET Day (no children in school)
- 27th-31st May: Half-term
- 3rd June: New half-term begins
- 5th June: Class photos
- 12th June: Wren class assembly
- 13th June: Robin class assembly
- 30th June-3rd July: Year 6 Residential
- 1st July: Year 2 trip
- 2nd July: Year 3 & 4 trip
- 5th July: Year 1 trip
- 9th July: Year 5 trip

## Maths Pig's Challenge



'Keep Calm and Love Maths; it is the only subject that counts!'

At GVP, we truly believe that Maths is for everyone. Lots of board games help with maths. Maths Pig's Challenge this week is to play a maths game with maths!

## Out & About:

Lots of classes have been practising for sports day! Lots of trips are coming up!

## Reminders

Please remember to book your school lunch: set an alarm for a Sunday night.

Check our lost property. It overflows really quickly! It is at the front of the office.

We try to reply to emails as quickly as possible, but sometimes this will take up to three working days.